



2021AF1324

DZE



.....	1
.....	2
.....	2
.....	3
.....	10



			DZE
	Z20211014		2021 08
			91210112715754447D
	37		
	37		
			2021 11 18
	20211066		
	20	50 %RH	
	TSG T7007-2016 1		
	GB 7588 2003 1		
	EN 81-20:2014 Safety rules for the construction and installation of lifts - Lifts for the transport of persons and goods - Part 20: Passenger and goods passenger lifts		
	EN 81-50:2014 Safety rules for the construction and installation of lifts -Examinations and tests - Part 50: Design rules, calculations, examinations and tests of lift components		

XPSQ





			DZE
	1400 kg-7800 kg		450 kg-2000 kg
			600 kg-3400 kg
	0.4-0.5		2:1
	1.16 m/s-10.12 m/s		
			/

0.50 m/s-4.0 m/s

0.58 m/s-5.06 m/s





--	--	--	--	--

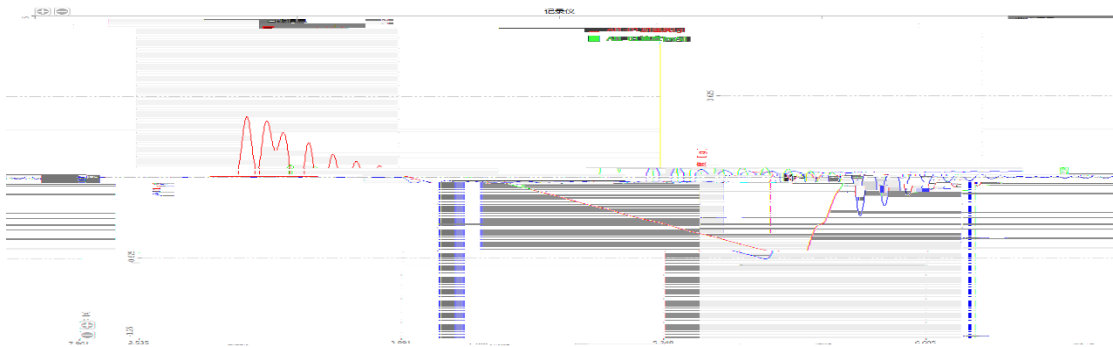


2.

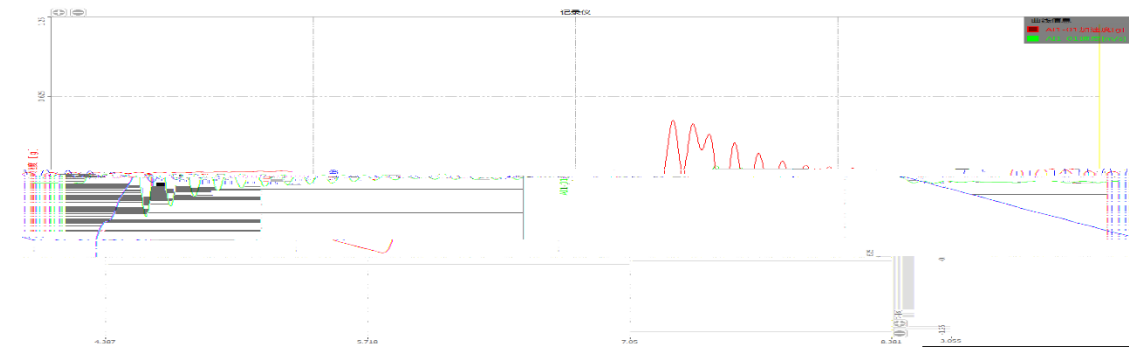
2.1 0.50m/s,



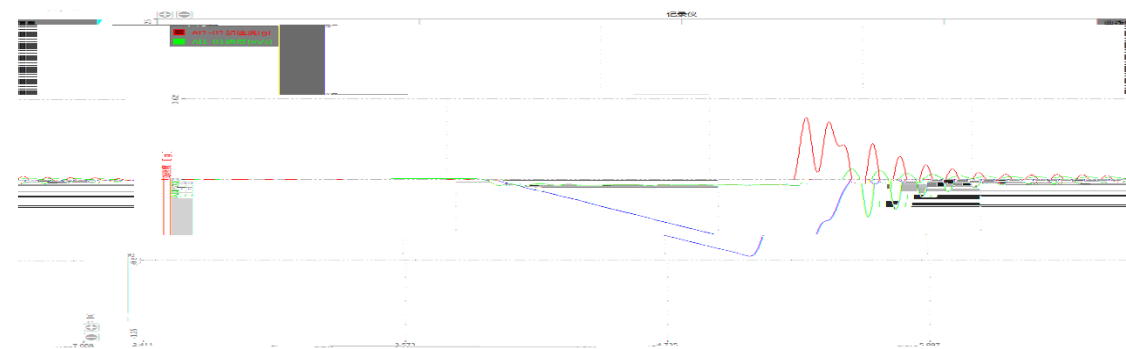
2



3



4

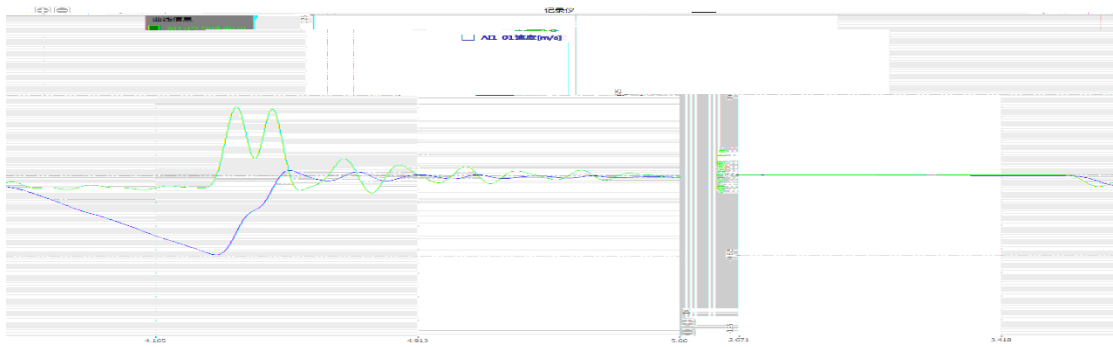


2

0.50m/s,

1250kg

4600kg





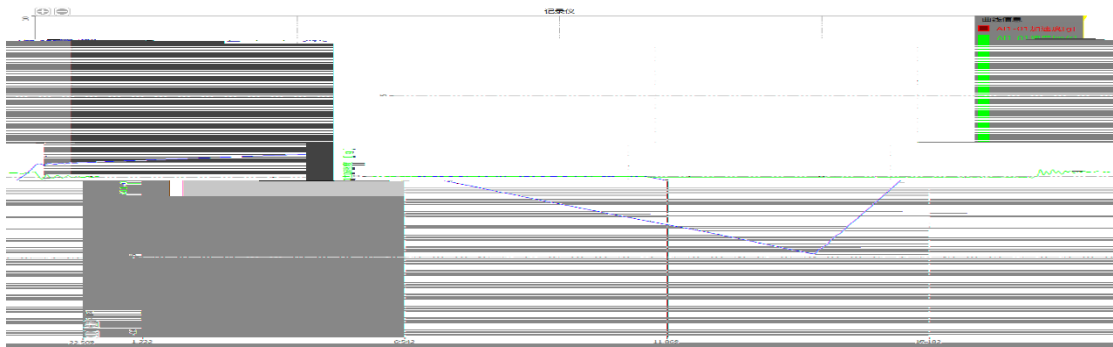
3

4.0m/s,

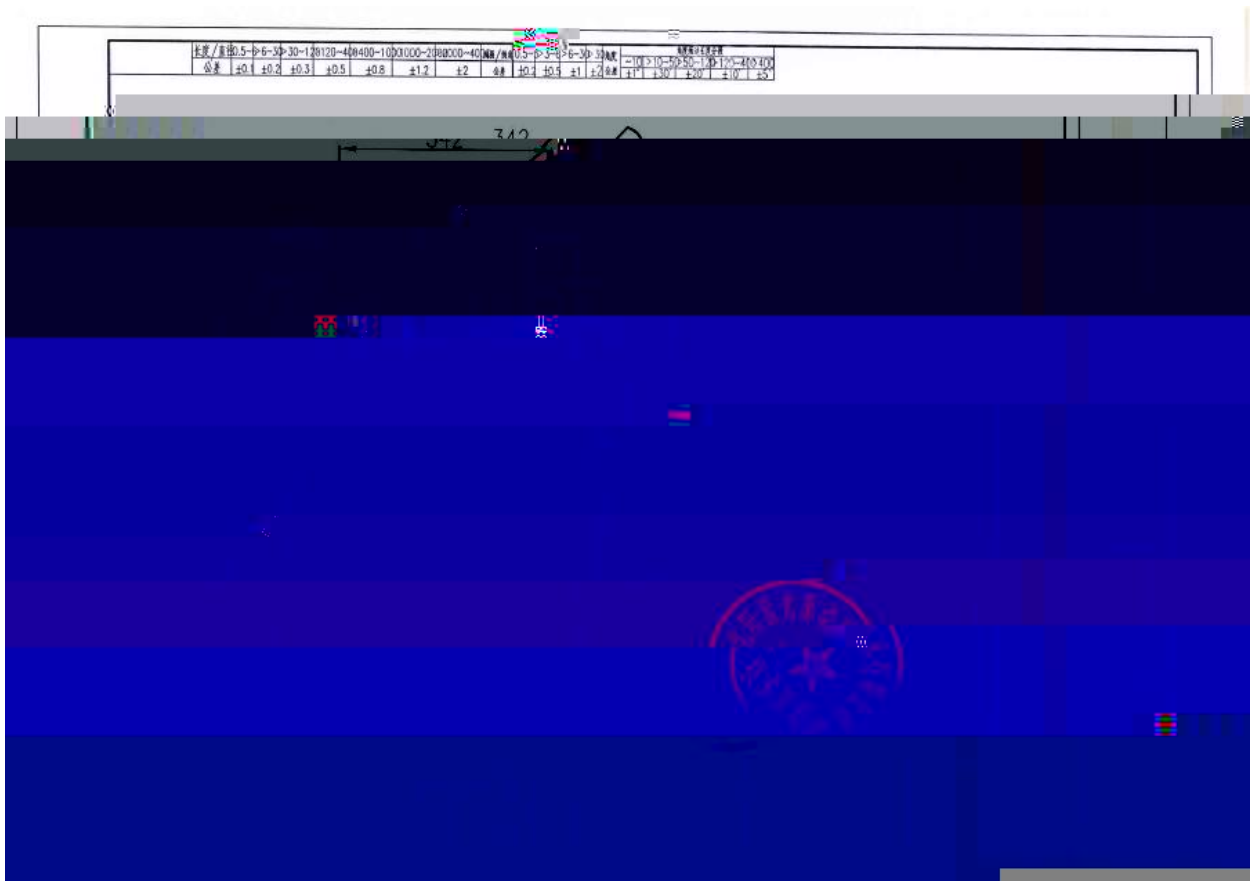
1250kg



4



3.





4.

/

